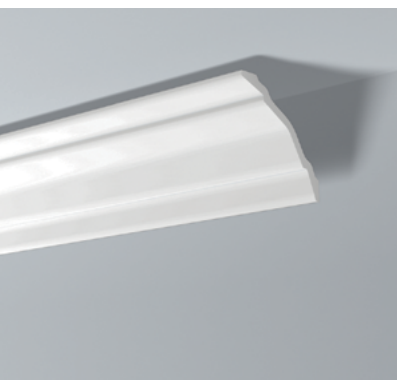


WALLSTYL® Baseboards, Chair rails & Mouldings



WALLSTYL®



1. MATERIAL

Constituent material	Extruded polystyrene; fine and closed-cell, white, homogeneous foam
Density	Baseboards: approx. 350 kg/m ³ . Chair rails: approx. 300 kg/m ³ . Mouldings: approx. 220 kg/m ³ .
Installation temperatures	+10°C to +30°C (ideal +15°C to +25°C)
Temperatures resistance	Max. +70°C
Surface hardness (Shore D - average values)	Baseboards: approx. 50 Chair rails: approx. 45 Mouldings: approx. 30 according to norm DIN 53505/ISO 868

2. SPECIFIC PROPERTIES

Factory Finish:

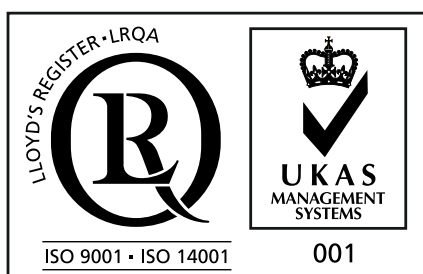
Matt white acrylic primer to be painted.

Visible surfaces:

Perfectly smooth surface with clean ends

Gluing surfaces:

Resistant surfaces with clean ends. Grooved on the back for better adhesion to the glue.



NMC sa reserves the right to update the product line or its technical features to the state-of-the-art technology anytime and without previous announcement. All given information is to the best of our knowledge. If you have any questions concerning technical details please contact the NMC sa information service. Any partial reproduction or reprint shall require our explicit approval.

NMC sa

Gertrud-Strasse – B-4731 Eynatten

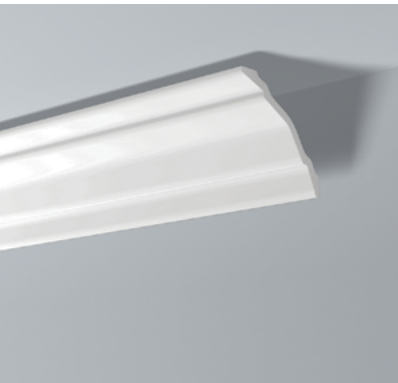
☎ +32 87 85 85 00 – 📠 +32 87 85 85 11

info@nmc.eu

we will succeed together



WALLSTYL® Baseboards, Chair rails & Mouldings



WALLSTYL®

Dimensions:

Length of a baseboard: 2m / 6.56ft and/or 2.44m / 8ft (tolerance ± 5 mm)

Length of a chair rail: 2m / 6.56ft and/or 2.44 m / 8ft (tolerance ± 5 mm)

Length of a moulding: 2m / 6.56ft (tolerance ± 5 mm).

Cross section of a profile: depending on the model (tolerance: $\pm 5\%$)

3. USE

Storage and installation conditions

Flat, sheltered from the sun and from humidity. Storage temperature $+15^{\circ}\text{C}$ / $+25^{\circ}\text{C}$, rel. Humidity 45% to 65%. Must be handled carefully. For the best result, the product will be fitted and stored in conditions close to those of final use (similar temperature and humidity). Fitting on a wet backing surface (fresh plaster) and in forced drying conditions (heat gun, dehumidifier, exceptionally high temperature) are to be ruled out. The installation instructions must be followed.

Laying surface:

The following laying surfaces are suitable: indoor plastered surfaces, coated plaster.

Surfaces must be clean, dry, free from dust, degreased and flat; rough down if necessary. If the product is to be applied to particular backing surfaces, please consult our technical department.

Tools:

HDPS-PU saw and NMC VARIO, VARIO PLUS or AD mitre-box.

Adhesive and joints:

Glue: ADEFIX®

Glue for cover skirtings: ADEFIX® PLUS

Coving edges and joints with height/projection > 8 cm : ADEFIX® PLUS

One-sided mounting: ADEFIX® PLUS

Filler and jointing material : ADEFIX®

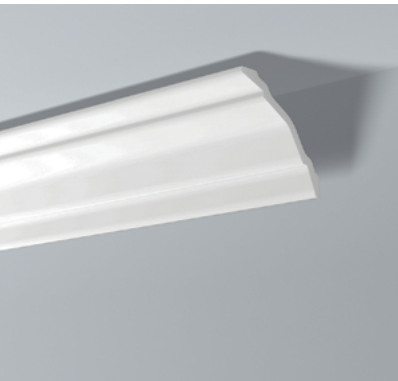
Width of joints: 3mm

Cleaning product for ADEFIX® (before hardening) : Water

Cleaning product for ADEFIX® PLUS (before hardening) : turpentine

After hardening: mechanically

WALLSTYL® Baseboards, Chair rails & Mouldings



WALLSTYL®

Finishes:

WALLSTYL® profiles can be painted, without any problem, with solventfree paints (e.g.: dispersion paints, acrylic lacquers, etc.) If, however, you wish to apply a solvent paint, it is advisable to test it.

4. SPECIAL INSTRUCTIONS

Storage and installation conditions:

WALLSTYL® polystyrene products are to be classified neither under "very toxic" nor under "toxic", according to the regulations concerning dangerous substances.

Important notes:

The elements are strictly decorative to the exclusion of any structural function; they are not designed to withstand loads and should be isolated by flexible joints from elements likely to convey strains or movements.

Physical properties of the products and the laying surfaces cause different natural expansion coefficients, and induce that the joint and the glue move or that (fine) hair cracks can be seen. This fact does not constitute grounds for complaint.

These products are flexible. However, excessive pressure may cause the product to snap. Please note that a break may lead to the projection of debris.